



ThermocousTex™ Plain Board (Polyester)

Description: A thermally bonded board manufactured using recycled polyester (PET Coke bottles) ideal for both thermal and acoustic insulation

Packing: Corrugated cardboard corners, and wrapped in plastic

Properties:

- Suitable for domestic, industrial and commercial ceilings
- Installed as nail up or suspended ceiling Generally installed under roof over purlin and/or side cladding of buildings
- Offers excellent acoustic performance
- Only acoustic ceiling tile offering thermal insulation
- Performs excellently in high humidity areas (up to 95%)

Profile: Butt joint

Sizes:

Widths: 595mm
 Lengths: 1195mm
 (595mm on request)

Weight:

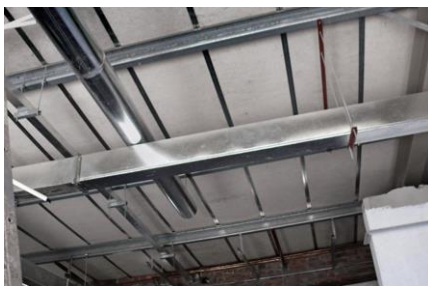
25mm	1.25kg/m ²
35mm	1.80kg/m ²
50mm	2.30kg/m ²

Fire: FTC10/007 12/03/2010 - B/B1/2/V (USP)
 Complies with SAN 428 Fire Standards
 FTC07/149 05/12/2007 - B/B1/2/H (SP & USP)
 Low flame spread

Thermal and Acoustic Properties of ThermocousTex Board

Ceilings	Finish	Density	NRC Value	R-Value (on insulation only)	U-Value (on total structure)	Percentage Reduction	ODP
35mm ThermocousTex Board	Raw	50kg/m ³	0.68	1,02m ² .K/W	0,70 W/m ² K	70.34%	0%
25mm ThermocousTex Board	Raw	50kg/m ³	0.69	0,74m ² .K/W	0,88 W/m ² K	62.67%	0%

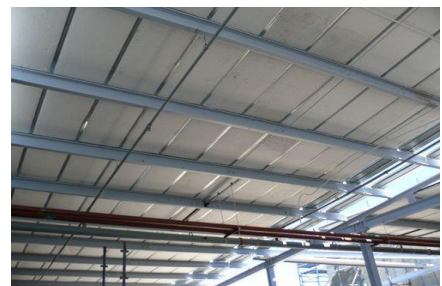
Over Purlin Application	Finish	Density	NRC Value	R-Value (on insulation only)	U-Value (on total structure)	Percentage Reduction	ODP
35mm ThermocousTex Board	Raw	50kg/m ³	0.68	1,03m ² .K/W	0,82 W/m ² K	83.93%	0%
25mm ThermocousTex Board	Raw	50kg/m ³	0.70	0,74m ² .K/W	1,07 W/m ² K	78.86%	0%



Over Purlin VIP Lounge-CTIA ThermocousTex



Top Hat Installation



Over Purlin Paramount



ThermocousTex™ Vinyl Laminated Board (Polyester & Vinyl Laminate)

Description: A thermally bonded board (faced with vinyl) manufactured using recycled polyester fibres (PET Coke bottles) ideal for both thermal and acoustic insulation

Packaging: Corrugated cardboard corners and wrapped in plastic

Profile: Butt Joint

Sizes:

Widths: 595mm
 Lengths: 1195mm
 (595mm on request)

- **Properties:**
- Suitable for domestic, commercial and industrial use
- Installed as nail up or suspended ceiling
- Offers excellent acoustic performance
- Only acoustic tile offering thermal insulation
- Performs excellently in high humidity areas

Weight: 25mm 1.25kg/m²
 35mm 1.80kg/m²
 50mm 2.30kg/m²

Fire:

- Complies with SANS 428 fire standards
- FTC09/049 04/07/2009 – B/B1/2H USP
- Low flame spread

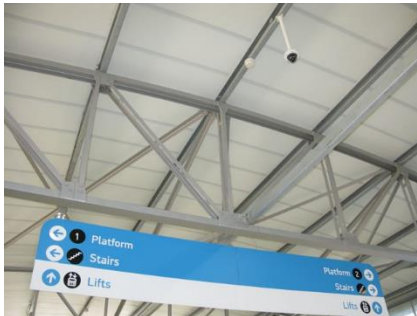
Thermal and Acoustic Properties of ThermocousTex Vinyl Laminated Board

Ceilings	Finish	Density	NRC Value	R-Value (on insulation only)	U-Value (on total structure)	Percentage Reduction	ODP
50mm Composite Board (2500g)	Raw	50kg/m ³	1.1	1,44m ² .K/W	0,54 W/m ² K	76.18%	0%
35mm Suspended Ceiling (1800g)	Vinyl	50kg/m ³	0,69	1,02m ² .K/W	0,70 W/m ² K	70.34%	0%
25mm Suspended Ceiling (1250g)	Vinyl	50kg/m ³	0,69	0,74m ² .K/W	0,88W/m ² K	62,67%	0%

Over Purlin Application	Finish	Density	NRC Value	R-Value (on insulation only)	U-Value (on total structure)	Percentage Reduction	ODP
50mm Composite Board (2500g)	Raw	50kg/m ³	1.1	1,44m ² .K/W	0,61 W/m ² K	87.92%	0%
35mm Suspended Ceiling (1800g)	Vinyl	50kg/m ³	0,69	1,03m ² .K/W	0,82 W/m ² K	83.93%	0%
25mm Suspended Ceiling (1250g)	Vinyl	50kg/m ³	0,69	0,74m ² .K/W	1,07 W/m ² K	78.86%	0%



Retrofit H-Section Ceiling Vinyl Faced Board 600mm x 1200mm Office



Suspended Ceiling Vinyl Faced Board 600mm x 600mm Railway Station



Suspended Ceiling Vinyl Faced Board 600mm x 1200mm Board Room



Thermocoustex™ Metroboard (Polyester & Facing)

Description: A thermally bonded board (faced with additional black or grey acoustic fabric) manufactured using recycled polyester fibres (PET Coke bottles) ideal for both thermal and acoustic insulation

Packaging: Corrugated cardboard corners and wrapped in plastic

Profile: Butt Joint

Sizes:

Width: 595mm

Length: 1195mm

(595mm on request)

Properties:

- Suitable for domestic, commercial and industrial ceilings
Installed under roof over purlin and/or side-cladding buildings
- Offers excellent acoustic performance
- Only acoustic ceiling tile offering thermal insulation
- Performs excellently in high humidity areas (up to 95% RH)

Weight: 25mm 1.25kg/m²

35mm 1.80kg/m²

50mm 2.30kg/m²

Fire: Complies with SAN 428 Fire Standards

FTC09/049 04/07/2009 -

B/B1/2/H USP

Low flame spread

Thermal and Acoustic Properties of Thermocoustex Metroboard

Ceilings	Finish	Density	NRC Value	R-Value (on insulation only)	U-Value (on total structure)	Percentage Reduction	ODP
35mm Thermocoustex Board	Raw	50kg/m ³	0.68	1,02m ² . K/W	0,70 W/m ² K	70.34%	0%
25mm Thermocoustex Board	Raw	50kg/m ³	0.69	0,74m ² . K/W	0,88 W/m ² K	62.67%	0%

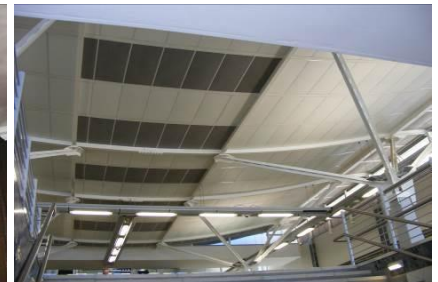
Over Purlin Application	Finish	Density	NRC Value	R-Value (on insulation only)	U-Value (on total structure)	Percentage Reduction	ODP
35mm Thermocoustex Board	Raw	50kg/m ³	0.68	1,03m ² . K/W	0,82 W/m ² K	83.93%	0%
25mm Thermocoustex Board	Raw	50kg/m ³	0.70	0,74m ² . K/W	1,07 W/m ² K	78.86%	0%



Suspended Ceiling Metroboard
600mm x 1200mm
Railway Turnstiles



Metroboard & Vinyl Faced Tiles
600mm x 600mm
Design Office



Grey Metroboard Tiles
600mm x 1200mm
Airport



ThermocousTex™ Plain, Vinyl or Metro Boards. (Has Excellent Insulation & Acoustic properties) Manufactured in boards using recycled Polyester PET bottles (e.g. Coke Bottles) and can be used over or between purlins, or cut to size to fit standard suspended ceiling systems.



These boards have excellent thermal and acoustic properties resulting in efficient temperature control and acoustic noise reduction within “people busy” environments.

Windemere Railway Station



Vodacom Data Centre

Gautrain

Projects Include; Gautrain, OR Tambo & Cape Town Airports, Virgin Active Health Centre’s, Windemere Railway Station, Silverstar Casino, Kigali Airport, ASIDI Schools.



ThermocousTex™ Plasterboard (Polyester & Kenaf Mix)

Description: A thermally bonded board manufactured using recycled polyester fibres (PET Coke bottles) in combination with renewable Kenaf plant fibres, ideal for both thermal and acoustic insulation

Packaging: Corrugated cardboard corners

Profile: Butt Joint

Sizes:

Widths: 1200mm (600mm on request)

Lengths: 1200mm, 1800mm, 2400mm
300mm, 3600mm

Suspended Ceiling:

1195mm x 595mm

(595mm x 595mm by request)

Weight:

25mm PlasterBoard 2.00kg/m²

35mm PlasterBoard 2.80kg/m²

Fire:

Low flame spread

FTC08/081a 01/09/2008 B/B2/B

Properties:

- Butt edged ceiling panels
- Suitable for industrial, commercial and domestic ceilings
- Complies with SANS 428 fire standards
- Installed as nail up or suspended ceilings under roof or over purlin and/or side cladding of building
- Only acoustic ceiling tile offering thermal insulation
- Performs excellently in high humidity areas (up to 95%)

Thermal and Acoustic Properties of ThermocousTex Plasterboard

Ceilings	Finish	Density	NRC Value	R-value (on insulation only)	U-value (on total structure)	Percentage Reduction	ODP
35mm ThermocousTex Plasterboard	Raw	87.5kg/m ³	0.65	1,02m ² .K/W	0,70W/m ² K	70.34%	0%
25mm ThermocousTex Plasterboard	Raw	87.5kg/m ³	0.70	0,74m ² .K/W	0,88W/m ² K	62.67%	0%

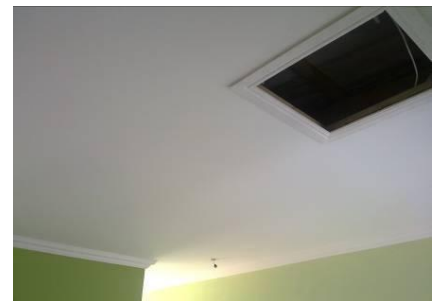
Over Purlin Application	Finish	Density	NRC Value	R-value (on insulation only)	U-value (on total structure)	Percentage Reduction	ODP
35mm ThermocousTex Plasterboard	Raw	87.5kg/m ³	0.65	1,03m ² .K/W	0,82 W/m ² K	83.93%	0%
25mm ThermocousTex Plasterboard	Raw	87.5kg/m ³	0.70	0,74m ² .K/W	0,86W/m ² K	78.86%	0%



Over Purlin Plasterboard
Industrial



Suspended Ceiling Plasterboard
600mm x 600mm
School



Nail Up Ceiling Plaster Board
Skimmed
Domestic

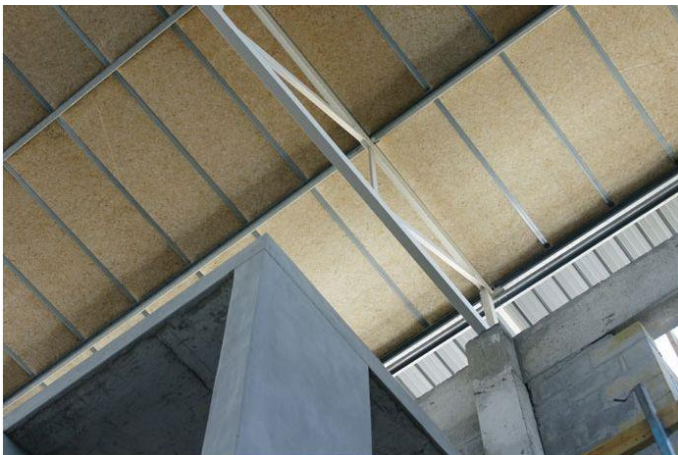


Thermocoustex™ Plasterboard (Has Excellent Insulation & Acoustic properties) Manufactured in boards using recycled Polyester PET bottles (e.g. Coke Bottles) combined with natural Kenaf Fibres and can be used over or between purlins, or within suspended ceiling systems.



These boards can be left exposed (raw form), skimmed or painted and are excellent thermal insulators, acoustic insulators from external noise and acoustic absorbers of internal noise.

Norman Henshilwood School



Christel House School

Over Purlin in Industrial

Projects Include; Norman Henshilwood School, Christel House School, Group R Schools in WC, Industrial and Domestic Houses